

Fanciful Flight

by Lori Siebert



Prints as shown may not be to exact scale.

Approx. 16" x 16" x 4"



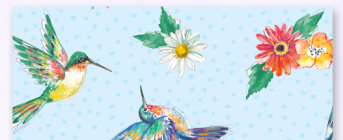
A 3029-11170-447
Main Fabric
2/3 yd.



B 3029-11175-496
Trim, Handles &
Main Lining
1 1/8 yds.



C 3029-11178-606
Inside Pockets
1/2 yd.



D 3029-11173-447
Lining Bottom
1/3 yd.

ALSO Requires:
One button
1/4 yd. Interfacing
2/3 yd. Fusible
Fleece

Fussy Cutting May Be Required



BASIC Tote Bag #2 - Version 2

Featuring Fanciful Flight

Please read all instructions carefully AND identify all fabrics before beginning.

All instructions include a 1/4" seam allowance and strips are cut selvage to selvage, unless stated otherwise.

1. Cut the following:

Fabric A:

For Horizontal Stripe Tote: Cut (1) 20" strip, subcut (2) 10" x 20" pieces

For Vertical Stripe Tote: Cut (1) 10" strip, subcut (2) 10" x 20" pieces

For Panel Tote: Fussy cut (2) 10" x 20" pieces

Fabric B - Cut (1) 12-1/2" strip, subcut

(2) 12-1/2" x 20" bag lining pieces

Cut (1) 7-1/2" strip, subcut (2) 7-1/2" x 20" pieces and (1) 2" x 6" strip

Cut (2) 5" strips, subcut (2) 5" x 40" strips

Cut (1) 3-1/2" strip, subcut (2) 3-1/2" x 20" pieces

Fabric C - Cut (1) 12" strip, subcut (2) 12" x 20" pocket pieces

Fabric D - Cut (1) 7-1/2" strip, subcut (2) 7-1/2" x 20" lining bottom pieces

Interfacing - Cut (2) 2-1/2" x 40" strips

Fusible Fleece - Cut (2) 20" x 21" pieces

2. Piecing Order:

1. Sew 3-1/2" x 20"

Fabric B strip to top of a 10" x 20"

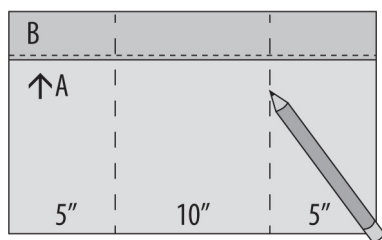
Fabric A piece with 1/2" seam.

Press seam up.

Topstitch 1/4" above

seam. Mark right side of fabrics as shown.

The handles will cover the marks. Make a total of 2 tote fronts (12-1/2" x 20" unfinished).



2. Center a 2-1/2" x 40"

interfacing piece

on a **Fabric B** 5" x 40"

piece. Fold long sides into center, wrong sides together. Fold in half lengthwise to make a 1-1/4" x 40" handle. Baste layers together down center of handle. Make a total of 2 handles. Quilt, if desired.



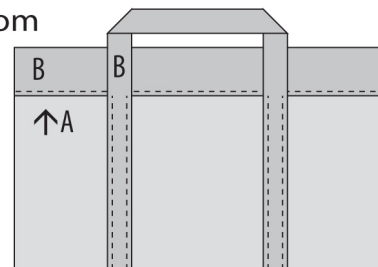
3. Fold **Fabric B** 2" x 6" strip wrong sides together in half lengthwise and press to crease. Fold long edges to center crease on wrong side. Fold in half lengthwise right sides together and press. Topstitch close to open edge for button loop.



4. Center a handle from

Step 2 over the marks on the right side of a tote front as shown, bottom edges even. Make sure the handle is not twisted.

Topstitch in place 1/4" on both long sides from A/B seam to bottom edge. Repeat with second handle and tote front.



5. Add 7-1/2" x 20"

Fabric B piece to bottom of tote front with 1/2" seam.

Press seam to

Fabric B piece.

Topstitch 1/4"

below seam. Fuse

fleece onto entire

wrong side. Quilt

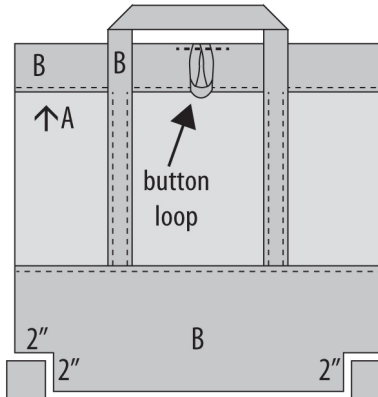
as desired working

around the handle. Trim fleece even with

edges of tote front. Baste button loop centered on top edge on one tote front.

Cut 2" squares from bottom corners of tote front.

Repeat to make second tote front.

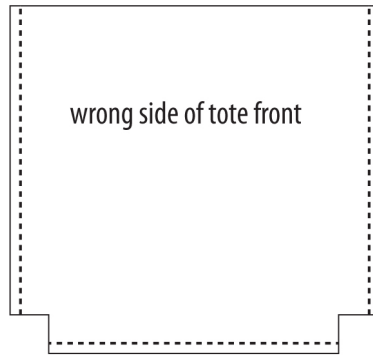


6. Pin handles down, away from top edge.

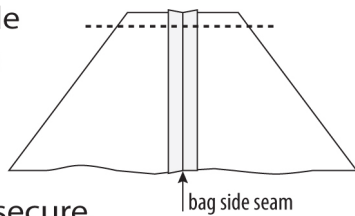
BASIC Tote Bag #2 - Version 2

Featuring Fanciful Flight

7. Place tote fronts right sides together aligning all raw edges. Sew across the bottom and both sides with a 1/2" seam allowance. Press seams open.



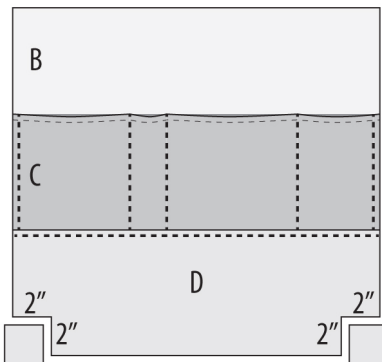
8. Leaving the tote fronts right sides together, fold a corner so the side and bottom seams are aligned. Sew opening closed with a 1/2" seam. Sew again, backstitching ends to secure.



9. Fold 12" x 20" **Fabric C** piece in half lengthwise (wrong sides together) so it is 6" x 20". Press flat. Topstitch 1/4" from folded edge. Make a total of 2 pockets.



10. Place a pocket on bottom edge of 12-1/2" x 20" **Fabric B** piece. Baste sides of pockets to **Fabric B** piece 1/4" from edge. Stitch pocket divisions as desired.



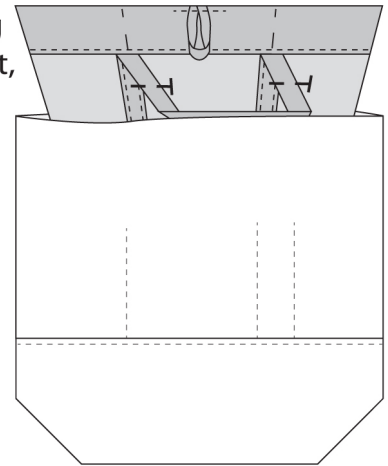
Sew **Fabric D** 7-1/2" x 20" piece to bottom of pocket with a 1/2" seam.

Press seam to **Fabric D** piece and topstitch 1/4" from seam on **Fabric D** piece. Cut 2" squares from bottom corners of bag lining. Make a total of 2 linings.

11. Place bag linings right sides together and sew together on bottom and sides as in Step 7, with a 1/2" seam, but leaving a 5" opening on bottom seam for turning bag.

12. Sew bottom corners of bag lining referring to Step 8.

13. With bag lining still wrong side out, slide the bag front into the lining. Align top edges and side seams. Pin together. Sew around top edge with a 1/2" seam allowance.



14. Turn bag right side out through opening in the lining. Stitch opening closed. Push lining down into bag and press top edge flat. Topstitch around top edge 1/4" from top. Finish topstitching the handles to bag fronts, continue along the edges of the handle loops. Remove all basting.

15. Close bag and fold button loop to front. Mark button placement. Stitch button in place. Enjoy your bag!