

# Blessed by Nature

By: Lisa Audit



Prints as shown may not be to exact scale.

Approx. 16" x 16" x 4"



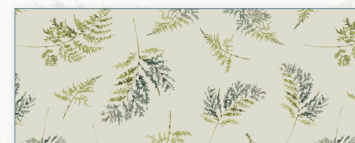
**A** 3041-17810-773  
Main Fabric  
3/8 yd.



**B** 3041-17813-707  
Trim, Handles &  
Main Lining  
1 1/8 yds.



**C** 3041-17814-770  
Inside Pockets  
1/2 yd.



**D** 3041-17812-777  
Lining Bottom  
1/3 yd.

**ALSO Requires:**  
One button  
1/4 yd. Interfacing  
2/3 yd. Fusible Fleece



# BASIC Tote Bag #2 - Version 1

## Featuring *Blessed by Nature*

Please read all instructions carefully AND identify all fabrics before beginning.

All instructions include a 1/4" seam allowance and strips are cut selvage to selvage, unless stated otherwise.

### 1. Cut the following:

**Fabric A** - Cut (1) 10" strip, subcut (2) 10" x 20" pieces

**Fabric B** - Cut (1) 12-1/2" strip, subcut (2) 12-1/2" x 20" bag lining pieces  
Cut (1) 7-1/2" strip, subcut (2) 7-1/2" x 20" pieces and (1) 2" x 6" strip  
Cut (2) 5" strips, subcut (2) 5" x 40" strips  
Cut (1) 3-1/2" strip, subcut (2) 3-1/2" x 20" pieces

**Fabric C** - Cut (1) 12" strip, subcut (2) 12" x 20" pocket pieces

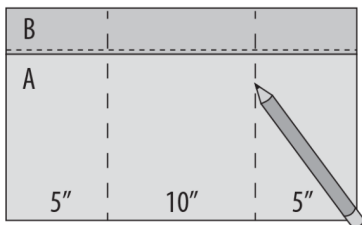
**Fabric D** - Cut (1) 7-1/2" strip, subcut (2) 7-1/2" x 20" lining bottom pieces

**Interfacing** - Cut (2) 2-1/2" x 40" strips

**Fusible Fleece** - Cut (2) 20" x 21" pieces

### 2. Piecing Order:

1. Sew 3-1/2" x 20" **Fabric B** strip to top of a 10" x 20" **Fabric A** piece with 1/2" seam. Press seam up.



Topstitch 1/4" above seam. Mark right side of fabrics as shown. The handles will cover the marks. Make a total of 2 tote fronts (12-1/2" x 20" unfinished).

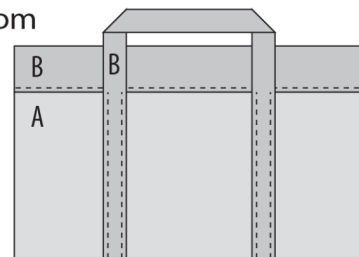
2. Center a 2-1/2" x 40" **interfacing** piece on a **Fabric B** 5" x 40" piece. Fold long sides into center, wrong sides together. Fold in half lengthwise to make a 1-1/4" x 40" handle. Baste layers together down center of handle. Make a total of 2 handles. Quilt, if desired.



3. Fold **Fabric B** 2" x 6" strip wrong sides together in half lengthwise and press to crease. Fold long edges to center crease on wrong side. Fold in half lengthwise right sides together and press. Topstitch close to open edge for button loop.

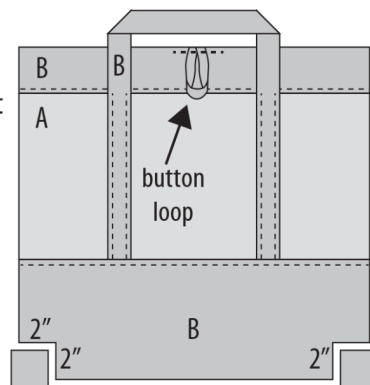


4. Center a handle from Step 2 over the marks on the right side of a tote front as shown, bottom edges even. Make sure the handle is not twisted.



Topstitch in place 1/4" on both long sides from A/B seam to bottom edge. Repeat with second handle and tote front.

5. Add 7-1/2" x 20" **Fabric B** piece to bottom of tote front with 1/2" seam. Press seam to **Fabric B** piece. Topstitch 1/4" below seam. Fuse fleece onto entire wrong side. Quilt as desired working around the handle. Trim fleece even with edges of tote front. Baste button loop centered on top edge on one tote front. Cut 2" squares from bottom corners of tote front. Repeat to make second tote front.

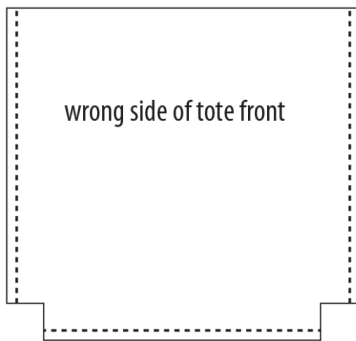


6. Pin handles down, away from top edge.

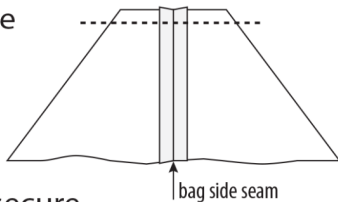
# BASIC Tote Bag #2 - Version 1

## Featuring *Blessed by Nature*

7. Place tote fronts right sides together aligning all raw edges. Sew across the bottom and both sides with a 1/2" seam allowance. Press seams open.



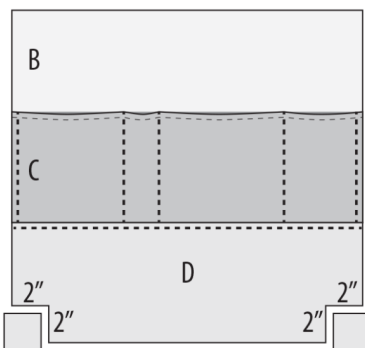
8. Leaving the tote fronts right sides together, fold a corner so the side and bottom seams are aligned. Sew opening closed with a 1/2" seam. Sew again, backstitching ends to secure.



9. Fold 12" x 20" **Fabric C** piece in half lengthwise (wrong sides together) so it is 6" x 20". Press flat. Topstitch 1/4" from folded edge. Make a total of 2 pockets.



10. Place a pocket on bottom edge of 12-1/2" x 20" **Fabric B** piece. Baste sides of pockets to **Fabric B** piece 1/4" from edge. Stitch pocket divisions as desired. Sew **Fabric D** 7-1/2" x 20" piece to bottom of pocket with a 1/2" seam.

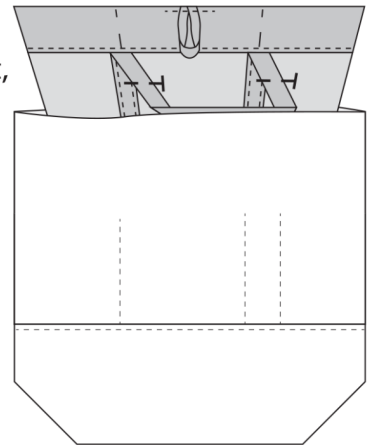


Press seam to **Fabric D** piece and topstitch 1/4" from seam on **Fabric D** piece. Cut 2" squares from bottom corners of bag lining. Make a total of 2 linings.

11. Place bag linings right sides together and sew together on bottom and sides as in Step 7 with a 1/2" seam, but leaving a 5" opening on bottom seam for turning bag.

12. Sew bottom corners of bag lining referring to Step 8.

13. With bag lining still wrong side out, slide the bag front into the lining. Align top edges and side seams. Pin together. Sew around top edge with a 1/2" seam allowance.



14. Turn bag right side out through opening in the lining. Stitch opening closed. Push lining down into bag and press top edge flat. Topstitch around top edge 1/4" from top. Finish topstitching the handles to bag fronts, continuing along the edges of the handle loops. Remove all basting.

15. Close bag and fold button loop to front. Mark button placement. Stitch button in place. Enjoy your bag!