

Blooming Blue

By Danielle Leone



A 3017-27689-141
5/8 yd.



B 3017-27694-440
1 5/8 yds.



C 3017-27691-144
1 1/3 yds.



D 3017-27694-444
5/8 yd.



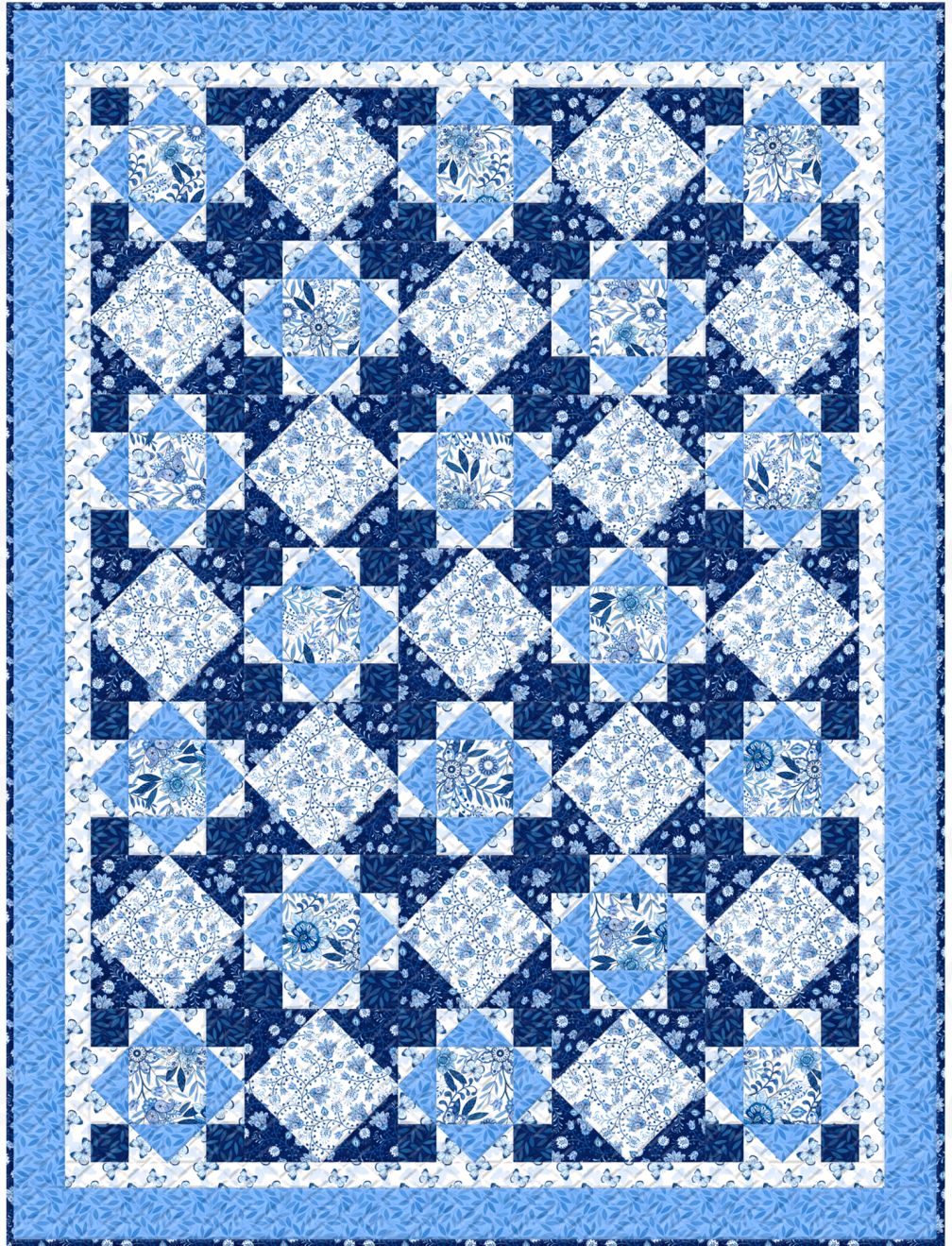
E 3017-27690-141
1 1/8 yds.



F 3017-27690-441
1 2/3 yds. (Incl. Binding)

Quilter's Choice

G Backing Only
44/45" - 5 1/8 yds.
108" - 2 1/8 yds.



Quilt Size: 61" x 81"




BASIC Twin Quilt #5 Featuring Blooming Blue

Please read all instructions carefully AND identify all fabrics before beginning.


All instructions include a 1/4" seam allowance and strips are cut selvage to selvage, unless stated otherwise.

1. Cut the following:

Fabric A - Cut (3) 5-1/2" strips, subcut (18) 5-1/2" squares

Fabric B - Cut (3) 6-1/4" strips, subcut (18) 6-1/4" squares then cut in half diagonally twice for 72 triangles 


Cut (7) 4" strips, subcut (2) 4" x 74-1/2" and (2) 4" x 61-1/2" borders

Fabric C - Cut (6) 3-3/8" strips, subcut (72) 3-3/8" squares then cut in half diagonally for 144 triangles 

Cut (6) 2-1/2" strips, subcut (2) 2-1/2" x 70-1/2" and (2) 2-1/2" x 54-1/2" borders


Fabric D - Cut (6) 3" strips, subcut (72) 3" squares

Fabric E - Cut (4) 7-5/8" strips, subcut (17) 7-5/8" squares

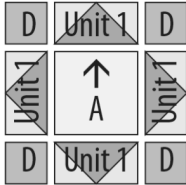
Fabric F - Cut (5) 5-7/8" strips, subcut (34) 5-7/8" squares then cut in half diagonally for 68 triangles 

Cut (8) 2-1/2" strips (binding)

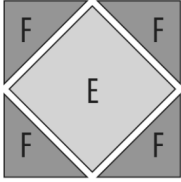
2. Piecing Order:

1. Stitch 2 **Fabric C** 3-3/8" triangles to short edges of a **Fabric B** 6-1/4" triangle as shown. Make a total of 72 Unit 1 (3" x 5-1/2" unfinished). 

Unit 1 - Make 72

2. Arrange 1 **Fabric A** 5-1/2" square, 4 Unit 1, and 4 **Fabric D** 3" squares in 3 rows. Sew into rows. Sew rows together. Make a total of 18 **Block 1** (10-1/2" square unfinished). 

Block 1 - Make 18

3. Stitch 4 **Fabric F** 5-7/8" triangles to sides of (1) 7-5/8" **Fabric E** square. Make a total of 17 **Block 2** (10-1/2" square unfinished). 

Block 2 - Make 17

4. Refer to Quilt Layout (Page 2) for arrangement and placement of blocks and borders.

5. Arrange blocks in 7 rows, alternating blocks. Stitch into rows. Sew rows together into quilt center (50-1/2" x 70-1/2" unfinished).

6. Sew **Fabric C** 2-1/2" x 70-1/2" borders to right and left sides of quilt center. Add **Fabric C** 2-1/2" x 54-1/2" borders to top and bottom of quilt center.

7. Sew **Fabric B** 4" x 74-1/2" borders to right and left sides of quilt. Add **Fabric B** 4" x 61-1/2" borders to top and bottom of quilt.

8. The quilt measures approximately 61-1/2" x 81-1/2" (unfinished). Make backing (**Fabric G**) approximately 8" larger than the top.

9. Layer and baste top, batting, and backing together. Quilt as desired. Attach binding (**Fabric F**) and enjoy!!

Shading of diagrams may vary depending on fabrics used.

Arrow indicates orientation of directional print, if applicable.

BASIC Twin Quilt #5 Featuring Blooming Blue

QUILT LAYOUT

Border measurements are the cut size.

Arrow indicates orientation of directional print, if applicable.

Shading of Quilt Layout may vary depending on fabrics used.

