



KAFFE
FASSETT
for

Free Spirit

Checkerboard Circles Quilt

Featuring 85 & Fabulous, Shot Cottons by
Kaffe Fassett

Collection:	85 & Fabulous, Shot Cottons by Kaffe Fassett
Technique:	Pieced
Skill Level:	Advanced Beginner
Finished Sizes:	Finished Size: 73" x 89" (185.42cm x 226.06cm) Finished Block Size: 8" x 8" (20.32cm x 20.32cm)

All possible care has been taken to assure the accuracy of this pattern. We are not responsible for printing errors or the manner in which individual work varies. Please read the instructions carefully before starting this project. If kitting, it is recommended a sample is made to confirm accuracy.

Checkerboard Circles Quilt

Project designed by Kaffe Fassett | Tech edited by Alison M. Schmidt

Fabric Requirements

DESIGN	COLOR	ITEM ID	YARDAGE
(A) Zinnia	Aqua	PWGP031.AQUA	$\frac{5}{8}$ yard (0.57m)
(B) Zinnia	Blue	PWGP031.BLUE	$\frac{3}{8}$ yard (0.34m)
(C) Zinnia	Contrast	PWGP031.CONTRAST	$\frac{5}{8}$ yard (0.57m)
(D) Spools	Blue	PWGP034.BLUE*	$\frac{3}{4}$ yard (0.69m)
(E) Spools	Contrast	PWGP034.CONTRAST	$\frac{3}{4}$ yard (0.69m)
(F) Beach Balls	Neutral	PWGP037.NEUTRAL	$\frac{3}{8}$ yard (0.34m)
(G) Targets	Black	PWGP067.BLACK	$2\frac{1}{4}$ yards (2.06m)
(H) Sprays	Contrast	PWGP107.CONTRAST	$\frac{5}{8}$ yard (0.57m)
(I) Shot Cottons	Dawn	SCGP121.DAWN	$1\frac{1}{4}$ yards (1.14m)
(J) Shot Cottons	Dusk	SCGP129.DUSK	$1\frac{1}{4}$ yards (1.14m)

* includes binding

Backing (Purchased Separately)

44" (1.12m) wide

Chevron Stripes Blue PWGP090.BLUE $5\frac{1}{2}$ yards (5.03m)

OR

108" (2.74m) wide

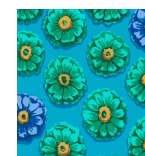
Millefiore Blue QBGP006.BLUE $2\frac{3}{8}$ yards (2.17m)

Additional Recommendations

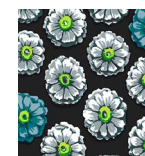
- 100% cotton thread in colors to match
- 81" x 97" (2.06m x 2.46m) batting



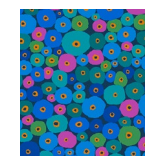
(A)



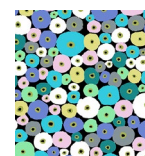
(B)



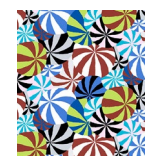
(C)



(D)



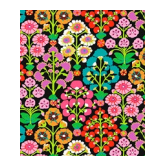
(E)



(F)



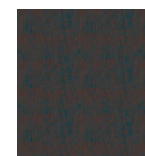
(G)



(H)



(I)



(J)



Backing
44"



Backing
108"

Checkerboard Circles Quilt

Cutting

WOF = Width of Fabric, cut from selvage to selvage

Fabrics A and H, cut from each:

- (2) 8½" x WOF; subcut
- (5) 8½" squares

Fabric B, cut:

- (1) 8½" x WOF; subcut
- (3) 8½" squares

Fabric C, cut:

- (2) 8½" x WOF; subcut
- (8) 8½" squares

Fabric D, cut:

- (9) 2½" x WOF for binding

Fabric E, cut:

- (7) 3" x WOF for inner borders

Fabric F, cut:

- (1) 8½" x WOF; subcut
- (4) 8½" squares

Fabric G, cut:

- (2) 8½" x WOF; subcut
- (7) 8½" squares
- (8) 6½" x WOF for outer borders

Fabrics I and J, cut from each:

- (8) 4½" x WOF

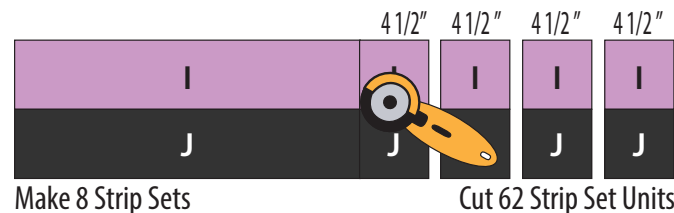
Instructions

Note: Use a ¼" seam allowance throughout. Sew all pieces with right sides together and raw edges even using matching thread. Press after each seam.

Block Construction

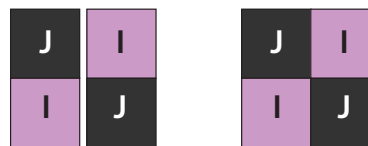
1. Stitch 1 each **Fabrics I** and **J** 4½" strips together lengthwise. Press towards **Fabric J**. Make a total of 8 strip sets – each should measure 4½" high. From these, cut (62) 4½"-wide strip set units. **Fig. 1**

Fig. 1



2. Sew 2 strip set units together, rotating one so fabrics alternate. Make a total of 31 Four-patch blocks. **Fig. 2**

Fig. 2



Make 31 Four-Patch Units
8 1/2" x 8 1/2"

Quilt Top Assembly

3. Noting the **Quilt Layout** diagram (page 4), arrange the Four-patch blocks and 8½" fabric squares in 9 rows, alternating the squares and blocks as shown.
4. Sew the blocks and squares into rows, pressing towards the squares. Sew rows together, pinning at intersections and nesting seam allowances. Quilt center should measure 56½" x 72½" (unfinished).
5. Sew all the **Fabric E** 3" x WOF strips together end-to-end. Measure the Quilt Center width and height before cutting and adding borders and adjust border measurements if necessary to match your measurements. Cut 2 inner side borders 72½"-long and 2 inner top/bottom borders 61½"-long. Sew longer borders to left and right sides of quilt center. Add shorter borders to top and bottom of quilt center. Press towards the border.
6. Sew all the **Fabric G** 6½" x WOF strips together end-to-end. Again, measure and adjust border measurements if needed. Cut 2 outer side borders 77½"-long and 2 outer top/bottom borders 73½"-long. Sew longer borders to left and right sides of quilt center. Add shorter borders to top and bottom of quilt to complete the quilt top. Press towards the outer border.

Checkerboard Circles Quilt

Finishing

7. Sew together the 2½" **Fabric D** binding strips end-to-end using diagonal seams. Press seams open. Press the binding strip in half wrong sides together.
8. Layer backing (wrong side up), batting, and quilt top (right side up). Baste the layers together and quilt as desired. Trim excess batting and backing even with the top after quilting is completed.
9. Leaving an 8" tail of binding, sew the binding to the top of the quilt through all layers matching all raw edges. Miter corners. Stop approximately 12" from where you started. Lay both loose ends of binding flat along quilt edge. Where the loose ends meet, fold them back on themselves and press to form a crease. Using this crease as your stitching line, sew the two open ends of the binding right sides together. Trim seam to ¼" and press open. Finish sewing binding to quilt.
10. Turn the binding to the back of quilt and hand-stitch in place.

Quilt Layout

