



*Free Spirit* 

## Lorenzo Quilt

Featuring Murano by Odile Bailloeuil

<b>Collection:</b>	Murano by Odile Bailloeuil
<b>Techniques:</b>	Pieced (including Y seams and partial seam piecing), Appliqué
<b>Skill Level:</b>	Intermediate
<b>Finished Size:</b>	54" x 60" (1.37m x 1.52m)

*All possible care has been taken to ensure the accuracy of this pattern. We are not responsible for printing errors or the manner in which individual work varies. Please read the instructions carefully before starting this project. If kitting, it is recommended a sample is made to confirm accuracy.*



Project designed by Odile Bailleoul | Tech edited by Alison M. Schmidt

## Fabric Requirements

DESIGN	COLOR	ITEM ID	YARDAGE
(A) Palazzo Grande	Marine	PWOB086.MARINE	1¼ yards (1.14m)
(B) Rialto	Jade	PWOB089.JADE	⅓ yard (0.31m)
(C) San Marco	Green	PWOB092.GREEN	⅔ yard (0.60m)
(D) Sulfuro	Multi	PWOB093.MULTI	½ yard (0.46m)
(E) Vetro	Marine	PWOB094.MARINE*	1 yard (0.91m)
(F) Basilico	Marine	PWOB095.MARINE	⅔ yard (0.60m)
(G) Lorenzo	Jade	PWOB096.JADE	1⅝ yards (1.49m)
(H) Lorenzo	Marine	PWOB096.MARINE	3 yards (2.74m)

\* includes binding

## Backing (Purchased Separately)

### 44" (1.12m) wide

Venezia Multi PWOB088.MULTI 3⅝ yards (3.31m)

### OR

### 108" (2.74m) wide

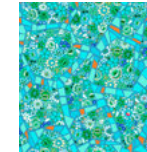
Rainbow Hexy - XL Peacock QBTP012.PEACOCK 1⅞ yards (1.71m)

## Additional Recommendations

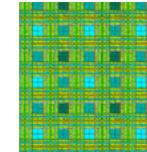
- 100% cotton thread in colors to match
- 62" x 68" (1.57m x 1.73m) batting
- **Optional:** Template plastic, Spray starch/starch alternative, Paper-backed fusible web, if using fusible appliqué technique



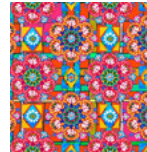
(A)



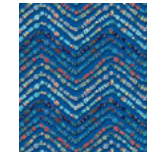
(B)



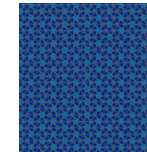
(C)



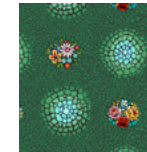
(D)



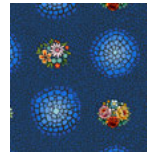
(E)



(F)



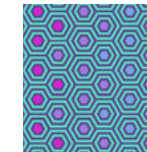
(G)



(H)



Backing  
44"



Backing  
108"

## Preparation

### Notes:

- Print all the template patterns (pages 13-14) at 100% and measure to confirm accuracy of printout.
- Trace onto template plastic or another sturdy material and cut out on the outer line to make cutting templates. If desired, mark a hole at the quarter inch seam allowance at the corners to aid in piecing accuracy.

## Cutting

WOF = Width of Fabric

### Notes:

- Read instructions all the way through before beginning to cut to understand where cut pieces are used and choose your preferred cutting methods.
- Press fabrics with starch or starch alternative and allow to dry before cutting fabric.
- Fussy-cut pieces will have bias edges so handle carefully to avoid stretching or distorting.
- Cut fabric in order listed, placing pieces with fussy cut motifs first to take advantage of all motifs available, then cut pieces that do not require specific motif placement.
- If desired, mark all pieces to be cut with a removable fabric marker before cutting.

### Fabric A, fussy cut:

- (2) 9½" squares
- (4) Template Z

### Fabric A Cutting diagram



### Fabric B, cut:

- (3) 2" x WOF; subcut  
(32) 2" x 3½" pieces
- (2) 1" x WOF; subcut  
(8) 1" x 7½" pieces

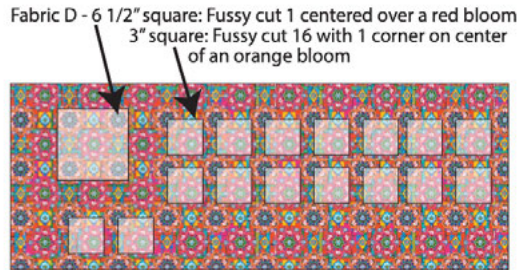
### Fabric C, cut:

- (3) 6½" x WOF; subcut  
(16) 6½" squares
- (2) 3½" x 6½" pieces

## Fabric D, fussy cut:

- (1) 6½" square with red bloom in center
- (16) 3" squares each with 1 corner on blue center of an orange bloom

### Fabric D Cutting diagram



## Fabric E, cut:

- (1) 6½" x WOF; subcut
  - (4) 3½" wide x 6½" high pieces
  - (5) 3½" wide x 5" high pieces
- (1) 5" x WOF; subcut
  - (11) 3½" x 5" pieces (16 total)
- (7) 2½" x WOF for binding

## Fabric F, cut:

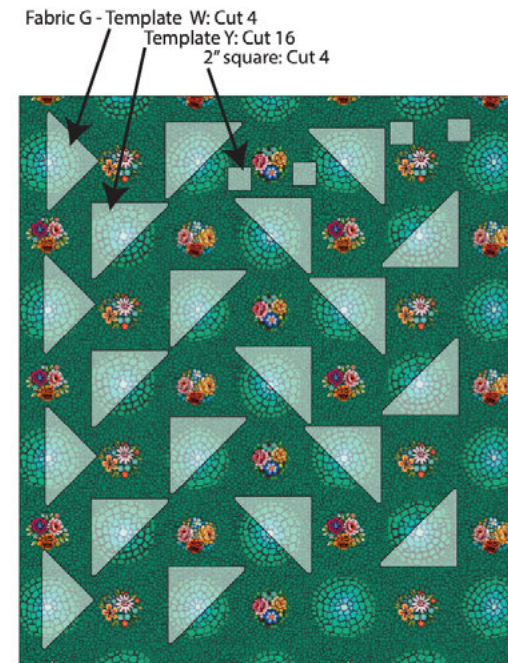
- (1) 6½" x WOF; subcut
  - (2) 6½" squares
  - (4) 5⅜" \* squares, then cut each in half diagonally once to yield 8 half-square triangles
- (2) 3½" x WOF; subcut
  - (16) 3½" x 5" pieces
- (3) 2" x WOF; subcut
  - (4) 2" x 17" strips
  - (4) 2" x 9½" strips

\*If you prefer to make your Flying Geese oversized and trim down to size, cut this square at least ⅛" larger.

## Fabric G, fussy cut:

- (4) Template W triangles, long edge parallel to the selvage and centered over half of a mosaic motif
- (16) Template Y triangles centered over half of a mosaic motif
- (4) 2" squares from background

### Fabric G Cutting diagram





**Fabric H, fussy cut:**

(16) Template Y centered over half of a mosaic motif

(16) 6½" squares with floral bouquet centered

(6) 6½" squares with mosaic motif centered

(16) 4½" squares with floral bouquet centered

(4) Template X triangles\* centered over half of a floral bouquet

\*These triangles will be appliquéd to the completed quilt top, so if your preference is for raw-edge appliqué, first add fusible interfacing to the wrong side of the fabric in the areas to be cut, then fussy cut the shapes, cutting away the ¼" seam allowance included on the template pattern. This is the recommended way to add this element, as the sharp points can be challenging to needle-turn.

**Fabric H Cutting diagram**

Fabric H - Template X: Cut 4  
 Template Y: Cut 16  
 4 1/2" square: Cut 16 with bouquet  
 6 1/2" square: Cut 16 with bouquet  
 6 1/2" square: Cut 6 with mosaic

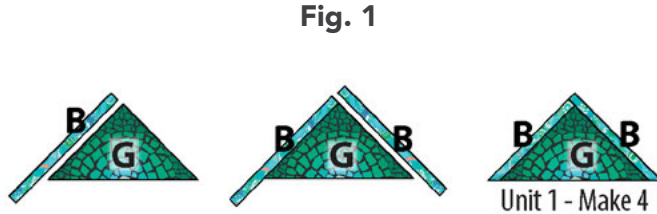


## Instructions

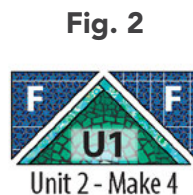
**Note:** Use a  $\frac{1}{4}$ " seam allowance throughout. Sew all pieces with right sides together and raw edges even using matching thread. Press seam allowances open unless otherwise stated.

### Block Construction

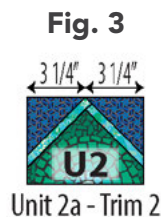
1. Stitch a **Fabric B** 1" x  $7\frac{1}{2}$ " piece to short edge of a fussy-cut **Fabric G** Template W triangle. Add a **Fabric B** 1" x  $7\frac{1}{2}$ " piece to other short edge. Trim **Fabric B** strips even with bottom of G triangle. Make a total of 4 Unit 1. **Fig. 1**



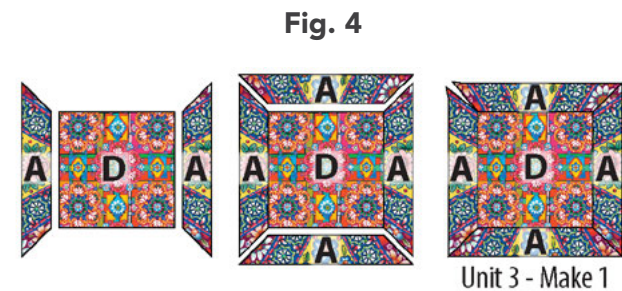
2. Sew 2 **Fabric F**  $5\frac{3}{8}$ " half-square triangles to short edges of Unit 1. Make a total of 4 Unit 2 ( $9\frac{1}{2}$ " x 5" unfinished). **Fig. 2**



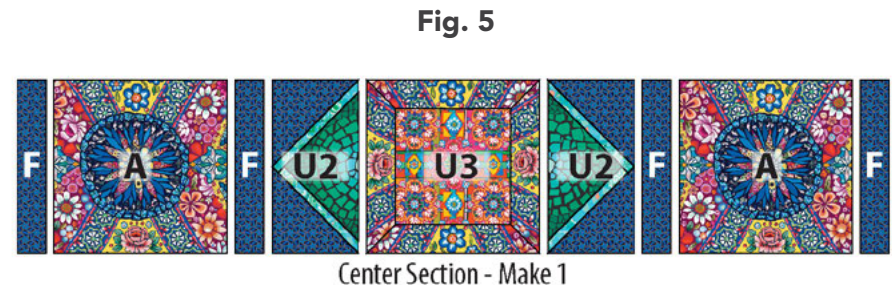
3. Trim a Unit 2 to  $6\frac{1}{2}$ " wide, measuring  $3\frac{1}{4}$ " out from center as shown. Trim to make a total of 2 Unit 2a ( $5$ " x  $6\frac{1}{2}$ " unfinished) and set aside. **Fig. 3**



4. Sew 2 fussy-cut **Fabric A** Template Z pieces with pink roses to the left and right sides of the **Fabric D**  $6\frac{1}{2}$ " square, starting and stopping seams  $\frac{1}{4}$ " from top and bottom of the D square. Repeat to add 2 fussy-cut **Fabric A** Template Z pieces with the group of small blue flowers to top and bottom of the D square, again starting and stopping seams  $\frac{1}{4}$ " from sides of square. At a corner, stitch short ends of 2 Template Z pieces together, starting at corner of the D square and working outwards. Repeat on remaining corners to complete Unit 3 ( $9\frac{1}{2}$ " square unfinished). **Fig. 4**



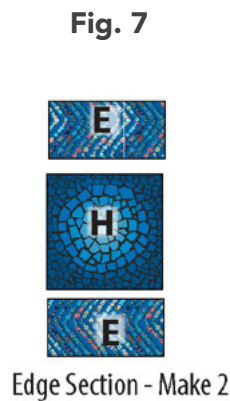
5. Arrange 4 **Fabric F** 2" x  $9\frac{1}{2}$ " strips, 2 fussy-cut **Fabric A**  $9\frac{1}{2}$ " squares, 2 Unit 2, and the Unit 3 in a row as shown. Stitch into Center Section ( $42\frac{1}{2}$ " unfinished x  $9\frac{1}{2}$ "). **Fig. 5**



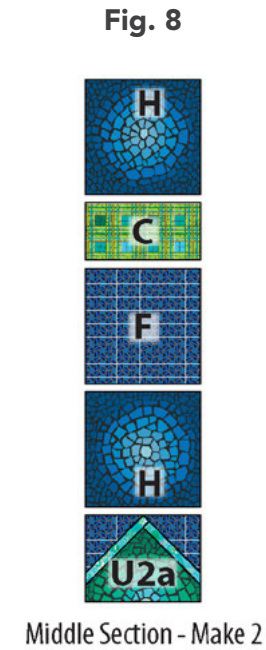
6. Stitch a **Fabric G** 2" square to one end of a **Fabric F** 2" x 17" strip. Make a total of 4 Unit 4 (18½" x 2" unfinished). Set aside until assembling the quilt top. When complete, the small G squares will be covered by appliquéd triangles. **Fig. 6**



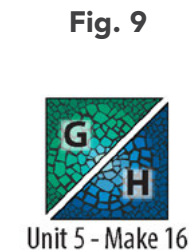
7. Stitch a **Fabric H** 6½" mosaic square between 2 **Fabric E** 3½" x 6½" pieces, so the zigzag pattern points in opposite directions as shown. Make a total of 2 Edge Sections (6½" x 12½" unfinished). **Fig. 7**



8. Arrange 2 **Fabric H** 6½" squares with mosaic motif and 1 each **Fabric C** 3½" x 6½" piece, **Fabric F** 6½" square, and Unit 2a in a row as shown. Stitch together. Make a total of 2 Middle Sections (6½" x 26" unfinished). **Fig. 8**

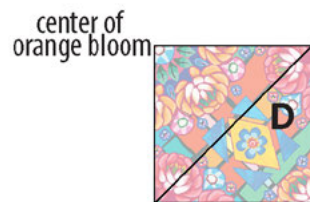


9. Sew 1 each **Fabrics G** and **H** Template Y triangles together along their long edges. Make a total of 16 Unit 5 (6½" square unfinished). **Fig. 9**



10. On the wrong side of a **Fabric D** 3" square, draw a diagonal line from corner to corner, making sure the center of the orange bloom is not intersected by the line. **Fig. 10a** Arrange the marked square on the H corner of a Unit 5, right sides together, so that the corner of the D square with the center of the orange bloom is towards the diagonal G/H seam. Stitch along marked line. Trim seam allowance to  $\frac{1}{4}$ ". Press corner out. Make a total of 16 Unit 6 ( $6\frac{1}{2}$ " square unfinished). **Fig. 10b**

Fig. 10a



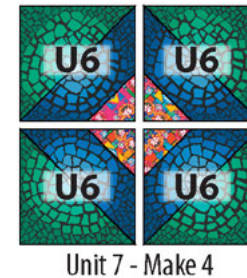
enlarged to show detail

Fig. 10b



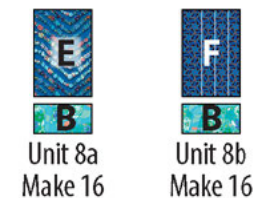
11. Arrange 4 Unit 6 in 2 rows with D corners in the center. Stitch into rows. Sew rows together. Make a total of 4 Unit 7 ( $12\frac{1}{2}$ " square unfinished). Set aside until ready to appliqué to assembled sections. **Fig. 11**

Fig. 11



12. Sew a **Fabric B** 2" x  $3\frac{1}{2}$ " piece to short end of a **Fabric E**  $3\frac{1}{2}$ " x 5" piece. Make a total of 16 Unit 8a ( $3\frac{1}{2}$ " x  $6\frac{1}{2}$ " unfinished). In the same manner, make 16 Unit 8b, replacing **Fabric E** with **Fabric F**. **Fig. 12**

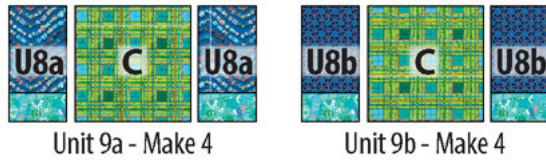
Fig. 12





13. Stitch a **Fabric C** 6½" square between 2 Unit 8a. Make a total of 4 Unit 9a (6½" x 12½" unfinished). In the same manner, make a total of 4 Unit 9b, replacing Unit 8a with Unit 8b. **Fig. 13**

Fig. 13



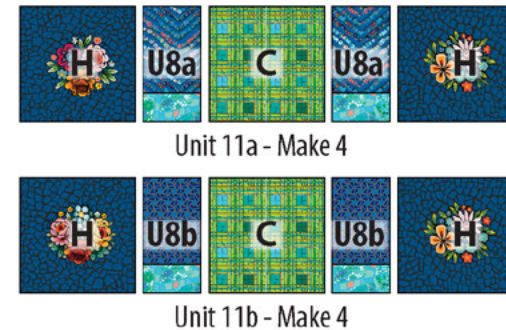
14. Sew 2 fussy-cut **Fabric H** 4½" squares with floral bouquets to the B edge of a Unit 9a, aligning outside edges. Press seam allowances toward H squares. Make a total of 4 Unit 10a. In the same manner, make 4 Unit 10b with fabrics and units indicated. **Fig. 14**

Fig. 14



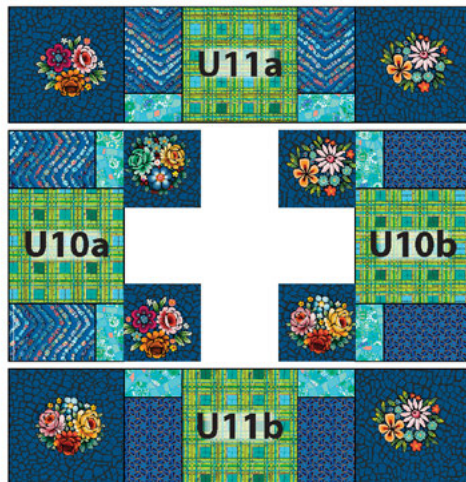
15. Arrange 2 **Fabric H** 6½" squares with floral bouquets, 2 Unit 8a, and 1 **Fabric C** 6½" square in a row. Stitch together. Make a total of 4 Unit 11a (6½" x 24½" unfinished). In the same manner, make 4 Unit 11b using Unit 9b. **Fig. 15**

Fig. 15



16. Sew 1 each Unit 10a and 10b between 1 each Unit 11a and 11b as shown, aligning outside edges. Press seams toward center of unit (there will be open space here which be covered by appliqué in the next step). Make a total of 4 Unit 12 (24½" square unfinished). **Fig. 16**

**Fig. 16**



Unit 12 - Make 4

17. Using your appliqué technique of choice, appliqué a Unit 7 (turned on point) centered on a Unit 11.

**Note:** If using a raw-edge appliqué technique, you may wish to first apply ½" - wide fusible web strips to the wrong side of the outer edges of each Unit 7 to reduce fraying, then trim each to 12" square removing the outer ¼" seam allowance, before stitching in place.

Make a total of 4 Corner Sections (24½" square unfinished). **Fig. 17**

**Fig. 17**



Corner Section - Make 4

*white line denotes appliqué edge*



## Quilt Top Assembly

*The quilt top is assembled with the use of partial seam piecing.*

18. Noting the **Quilt Layout** diagram (page 12), arrange all sections and the 4 Unit 4 as shown.
19. Sew a Unit 4 to top or bottom inside edge of each Corner Section, aligning the inner edges. Stop stitching at least 1" from outside edges due to the need for partial seam piecing, to add the Edge Sections later.
20. Sew each Middle Section between 2 assembled Corner Sections/Unit 4 to complete the top and bottom rows.
21. Stitch the Center Section between the top and bottom rows. The Center Section should align evenly with the outer ends of Unit 4.
22. Sew the long side of the Edge Sections to right and left edges of just the Center Section/short ends of Unit 4. Then fold the quilt top right sides together along the seams between the Unit 4 and Corner Sections and, starting from the partial seam left open in step 19, finish joining the Edge Sections all the way to the outermost edges of the quilt top to complete all piecing of the quilt top.
23. Using your appliqué technique of choice, appliqué 4 **Fabric H** Template X triangles to the center of the quilt top as shown, covering corners of Unit 3 and the **Fabric G** squares in all Unit 4. **Fig. 18**

Fig. 18

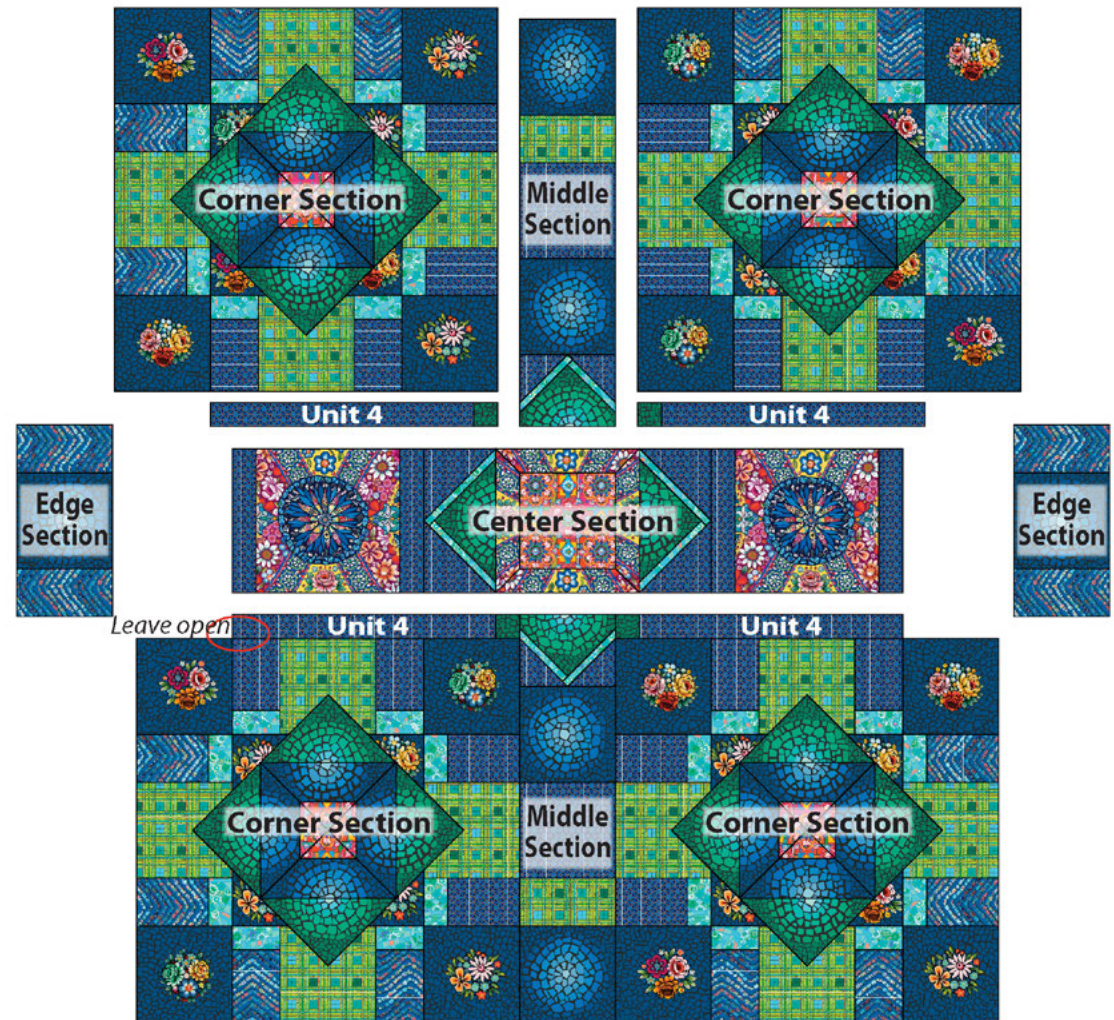


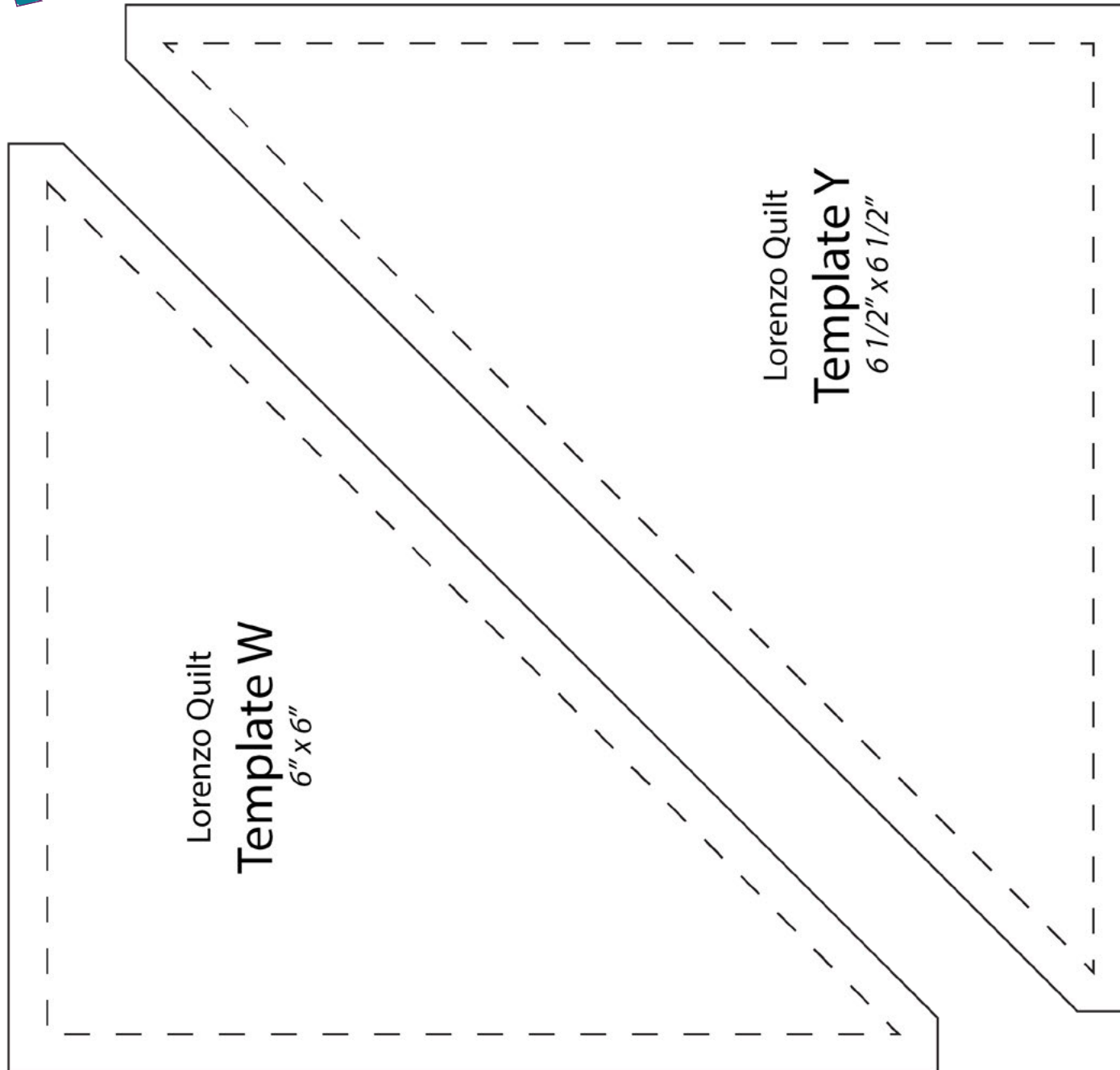


## Finishing

24. Sew together the 2½" **Fabric E** binding strips end-to-end using diagonal seams. Press seams open. Press the binding strip in half wrong sides together.
25. Layer backing (wrong side up), batting, and quilt top (right side up). Baste the layers together and quilt as desired. Trim excess batting and backing even with the top after quilting is completed.
26. Leaving an 8" tail of binding, sew the binding to the top of the quilt through all layers matching all raw edges. Miter corners. Stop approximately 12" from where you started. Lay both loose ends of binding flat along quilt edge. Where the loose ends meet, fold them back on themselves and press to form a crease. Using this crease as your stitching line, sew the two open ends of the binding right sides together. Trim seam to ¼" and press open. Finish sewing binding to quilt.
27. Turn the binding to the back of quilt and hand-stitch in place.

## Quilt Layout



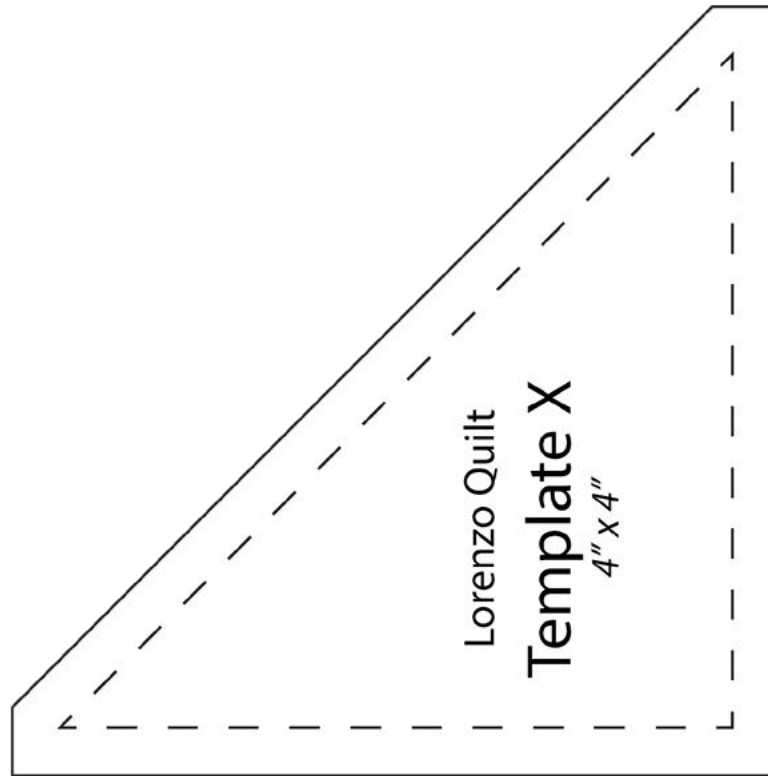


Lorenzo Quilt  
Template W  
6" x 6"

Lorenzo Quilt  
Template Y  
6 1/2" x 6 1/2"

This square should measure 1" x 1" (2.54cm x 2.54cm) when printed.

\*\*\* Measure templates before cutting to confirm printing at 100%\*\*\*



This square should measure 1" x 1" (2.54cm x 2.54cm) when printed.

\*\*\* Measure templates before cutting to confirm printing at 100%\*\*\*